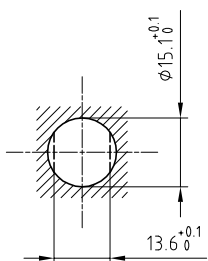


DANGER

Outer shell	: Brass (UNS C38500)	Chrome plated (FS-QQ-C-320B)
Earthing crown	: Bronze (UNS C54400)	Gold plated (ISO 27874)
Insulator	: PTFE	-
Female contact	: Cu-Be (UNS C17300)	Gold plated (ISO 27874)
Locking washer	: Bronze (UNS C52100)	Nickel plated (FS-QQ-N-290A)
Other metallic parts	: Brass (UNS C38500)	Nickel plated (FS-QQ-N-290A)
Label	: Polyester	Yellow

Panel cut-out



Torque for mounting nut : 6 Nm

Spanner for nut : DCA.91.231.7TN or
Spanner for nut : DCG.91.231.7TN

**Fixed socket , with nut fixing .
Series 2S , (1) HV(φ2)**

Echelle	Dessiné	16.12.2015	OVU / NHA
	Contrôle	16.12.2015	NHA / ATVI
	Modif.	00	16.12.2015 / OVU

ETUDE N°



LEMO

CH-1024 Ecublens

ERA.2S.408.CTL