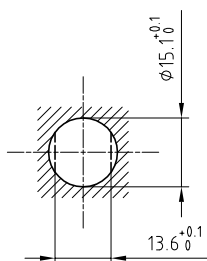


Outer shell	: Brass (UNS C38500)	Chrome plated (FS-QQ-C-320B)
Earthing crown	: Bronze (UNS C54400)	Nickel plated (FS-QQ-N-290A)
Insulator	: PEEK	-
Female contact	: Bronze (UNS C54400)	Gold plated (ISO 27874)
Male contact	: Brass (UNS C38500)	Gold plated (ISO 27874)
Locking washer	: Bronze (UNS C52100)	Nickel plated (FS-QQ-N-290A)
Other metallic parts	: Brass (UNS C38500)	Nickel plated (FS-QQ-N-290A)

Panel cut-out



Torque for mounting nut : 6 Nm

Spanner for nut : DCA.91.231.7TN or  
Spanner for nut : DCG.91.231.7TN

**Fixed socket , with nut fixing .  
Series 2S , multipole (2)**

ETUDE N° E7067

Echelle —	Dessiné	28.08.1998	BC / RMO
	Contrôle	20.03.2017	NHA / ATVI
	Modif.	01	20.03.2017/ OVU



**LEMO**

CH-1024 Ecublens

**ERA.2S.302.CLL**