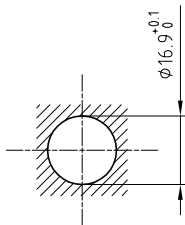


Outer shell	: Brass (UNS C38500)	Chrome plated (FS-QQ-C-320B)
Earthing crown	: Cu-Be (UNS C17200)	Gold plated (ISO 27874)
Insulator	: PTFE	-
Female contact	: Cu-Be (UNS C17300)	Gold plated (ISO 27874)
Gasket	: Silicone (HTV)	-
Tapered washer	: Brass (UNS C38500)	Nickel plated (FS-QQ-N-290A)
Other metallic parts	: Brass (UNS C38500)	Nickel plated (FS-QQ-N-290A)
O-Ring	: Silicone (MVQ)	-
Label	: Polyester	Yellow

Panel cut-out



Torque for mounting nut : 7 Nm

Fixed socket , nut fixing .
Series 1Y , (1) HV(φ1.4)

ETUDE N° E2815

Echelle —	Dessiné	05.07.2001	OVU / RMO
	Contrôle	20.03.2018	NHA / ATVI
	Modif.	03	20.03.2018/ OVU



LEMO

LEMO SA
Chemin des Champs-Courbes 28
1024 Ecublens - SWITZERLAND

Tel. (+41 21) 695 16 00
email : info@lemo.com
www.lemo.com

ERA.1Y.410.CTL