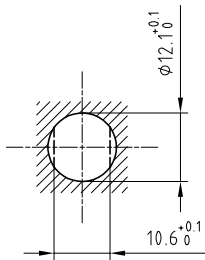


Outer shell	: Brass (UNS C38500)	Chrome plated (SAE AMS 2460)
Earthing crown	: Bronze (UNS C54400)	Gold plated (ISO 27874)
Insulator	: PEEK	-
Female contact	: Bronze (UNS C54400)	Gold plated (ISO 27874)
Locking washer	: Bronze (UNS C52100)	Nickel plated (SAE AMS QQ N 290)
Other metallic parts	: Brass (UNS C38500)	Nickel plated (SAE AMS QQ N 290)
Label	: Polyester	Yellow

Panel cut-out



Torque for mounting nut : 4.5 Nm

Spanner for nut : DCA.91.201.4TN or
Spanner for nut : DCG.91.201.4TN

**Fixed socket , with nut fixing .
Series 1S , (1) HV(φ0.9)**

ETUDE N° E7067-E6096

Echelle —	Dessiné	04.09.2020	OVU / NHA
	Contrôle	04.09.2020	NHA / CDE
	Modif.	00	04.09.2020 / OVU



LEMO

LEMO SA
Chemin des Champs-Courbes 28
1024 Ecublens - SWITZERLAND

Tel. (+41 21) 695 16 00
email : info@lemo.com
www.lemo.com

ERA.1S.408.CLL