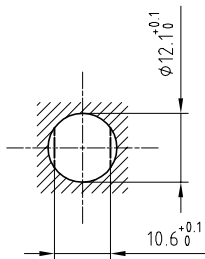


Outer shell	: Brass (UNS C38500)	Chrome plated (FS-QQ-C-320B)
Earthing crown	: Bronze (UNS C54400)	Gold plated (ISO 4523)
Insulator	: PTFE	-
Female contact	: Cu-Be (UNS C17300)	Gold plated (ISO 4523)
Locking washer	: Bronze (UNS C52100)	Nickel plated (FS-QQ-N-290A)
Other metallic parts	: Brass (UNS C38500)	Nickel plated (FS-QQ-N-290A)
Label	: Polyester	Yellow

Panel cut-out



Torque for mounting nut : 4.5 Nm

Spanner for nut : DCA.91.201.4TN or
Spanner for nut : DCG.91.201.4TN

Fixed socket , with nut fixing .
Series 1S , (1) HV(φ1.3)

Echelle —	Dessiné	04.03.05	OVU / RMO
	Contrôle	04.03.05	RMO / CDE
	Modif.	00	04.03.05 / OVU

ETUDE N°



LEMO

CH-1024 Ecublens

ERA.1S.405.CTL