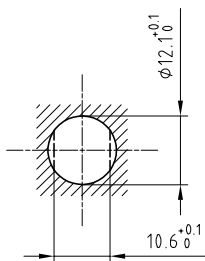


Outer shell	: Brass (UNS C38500)	Chrome plated (FS-QQ-C-320B)
Earthing crown	: Bronze (UNS C54400)	Gold plated (ISO 27874)
Insulator	: PTFE	-
Male contact	: Brass (UNS C38500)	Gold plated (ISO 27874)
Locking washer	: Bronze (UNS C52100)	Nickel plated (FS-QQ-N-290A)
Other metallic parts	: Brass (UNS C38500)	Nickel plated (FS-QQ-N-290A)
Label	: Polyester	Yellow

Panel cut-out



Torque for mounting nut : 4.5 Nm

Spanner for nut : DCA.91.201.4TN or  
Spanner for nut : DCG.91.201.4TN

**Fixed socket , with nut fixing .  
Series 1S , (1) HV(φ1.3)**

ETUDE N° E7067

Echelle	Dessiné	05.08.2019	OVU / NHA
	Contrôle	05.08.2019	NHA / ATVI
	Modif.	00	05.08.2019/ OVU



**LEMO**

LEMO SA  
Chemin des Champs-Courbes 28  
1024 Ecublens - SWITZERLAND

Tel. (+41 21) 695 16 00  
email : info@lemo.com  
www.lemo.com

**ERA.1S.405.CTA**