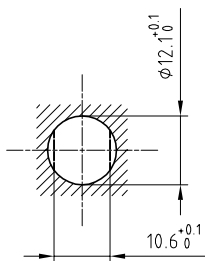


Outer shell	: Brass (UNS C38500)	Chrome plated (FS-QQ-C-320B)
Earthing crown	: Bronze (UNS C54400)	Gold plated (ISO 4523)
Insulator	: PEEK	-
Female contact	: Cu-Be (UNS C17300)	Gold plated (ISO 4523)
Locking washer	: Bronze (UNS C52100)	Nickel plated (FS-QQ-N-290A)
Other metallic parts	: Brass (UNS C38500)	Nickel plated (FS-QQ-N-290A)
Label	: Polyester	Yellow

Panel cut-out



Torque for mounting nut : 4.5 Nm

Spanner for nut : DCA.91.201.4TN or
Spanner for nut : DCG.91.201.4TN

**Fixed socket , with nut fixing .
Series 1S , (1) HV(φ1.3)**

ETUDE N°

Echelle —	Dessiné	10.02.2010	OVU / JPBA
	Contrôle	10.02.2010	JPBA / CDE
	Modif.	00	10.02.2010 / OVU



LEMO

CH-1024 Ecublens

ERA.1S.405.CLL