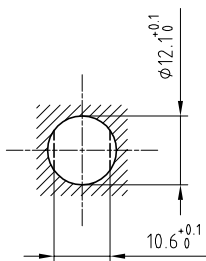


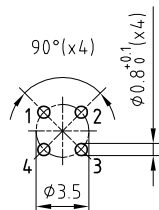
Outer shell	: Brass (UNS C38500)	Chrome plated (FS-QQ-C-320B)
Earthing crown	: Bronze (UNS C54400)	Nickel plated (FS-QQ-N-290A)
Insulator	: PEEK	-
Female contact	: Bronze (UNS C54400)	Gold plated (ISO 27874)
Male contact	: Brass (UNS C38500)	Gold plated (ISO 27874)
Locking washer	: Bronze (UNS C52100)	Nickel plated (FS-QQ-N-290A)
Other metallic parts	: Brass (UNS C38500)	Nickel plated (FS-QQ-N-290A)

Panel cut-out



Torque for mounting nut : 4.5 Nm

PCB drilling pattern



Spanner for nut : DCA.91.201.4TN or  
Spanner for nut : DCG.91.201.4TN

**Fixed socket , nut fixing ,  
for PCB .**

**Series 1S , multipole (4)**

ETUDE N° E7067

Echelle —	Dessiné	03.06.2016	OVU / NHA
	Contrôle	03.06.2016	NHA / ATVI
	Modif.	00	03.06.2016/ OVU



**LEMO**

CH-1024 Ecublens

**ERA.1S.304.CLN**