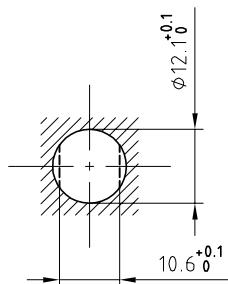


Outer shell	: Brass (UNS C38500)	Chrome plated (FS-QQ-C-320B)
Earthing crown	: Bronze (UNS C54400)	Nickel plated (FS-QQ-N-290A)
Insulator	: PEEK	-
Female contact	: Bronze (UNS C54400)	Gold plated (ISO 4523)
Male contact	: Brass (UNS C38500)	Gold plated (ISO 4523)
Locking washer	: Bronze (UNS C52100)	Nickel plated (FS-QQ-N-290A)
Other metallic parts	: Brass (UNS C38500)	Nickel plated (FS-QQ-N-290A)

Panel cut-out



Torque for mounting nut : 4.5 Nm

Spanner for nut : DCA.91.201.4 TN or
Spanner for nut : DCG.91.201.4 TN

Fixed socket , with nut fixing .
Series 1S , multipole (2)

ETUDE N°

Echelle	Dessiné	26.01.2001	OVU / RMO
	Contrôle	26.01.2001	RMO / CDE
	Modif.	00	26.01.2001/ OVU



LEMO

CH-1024 Ecublens

ERA.1S.302.CLL