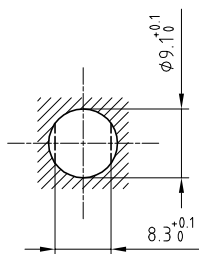


Outer shell	: Brass (UNS C38500)	Chrome plated (FS-QQ-C-320B)
Earthing crown	: Bronze (UNS C54400)	Gold plated (ISO 4523)
Insulator	: PTFE	-
Male contact	: Brass (UNS C38500)	Gold plated (ISO 4523)
Locking washer	: Bronze (UNS C52100)	Nickel plated (FS-QQ-N-290A)
Other metallic parts	: Brass (UNS C38500)	Nickel plated (FS-QQ-N-290A)
Label	: Polyester	Yellow

Panel cut-out



Torque for mounting nut : 2.5 Nm

Spanner for nut : DCA.91.161.1TN or
Spanner for nut : DCG.91.161.1TN

Fixed socket , with nut fixing .
Series OS , (1) HV($\phi 0.9$)

ETUDE N° E7067-E951-E7198

Echelle —	Dessiné	20.02.2007	OVU / RMO
	Contrôle	24.02.2012	JPBA / ATVI
	Modif.	01	24.02.2012 / OVU



LEMO

CH-1024 Ecublens

ERA.OS.403.CTA