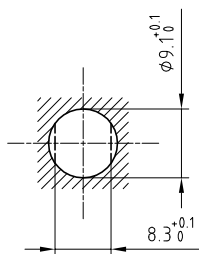


Outer shell	: Brass (UNS C38500)	Chrome plated (FS-QQ-C-320B)
Earthing crown	: Bronze (UNS C54400)	Nickel plated (FS-QQ-N-290A)
Insulator	: PEEK	-
Female contact	: Bronze (UNS C54400)	Gold plated (ISO 27874)
Male contact	: Brass (UNS C38500)	Gold plated (ISO 27874)
Locking washer	: Bronze (UNS C52100)	Nickel plated (FS-QQ-N-290A)
Other metallic parts	: Brass (UNS C38500)	Nickel plated (FS-QQ-N-290A)

Panel cut-out



Torque for mounting nut : 2.5 Nm

Spanner for nut : DCA.91.161.1TN or
Spanner for nut : DCG.91.161.1TN

**Fixed socket , with nut fixing .
Series 0S , multipole (2)**

ETUDE N° E7067-E10416

Echelle	Dessiné	08.10.2015	OVU / NHA
	Contrôle	08.10.2015	NHA / ATVI
	Modif.	00	08.10.2015/ OVU



LEMO

CH-1024 Ecublens

ERA.0S.302.CLL