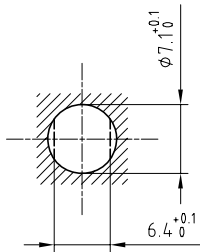


Outer shell	: Brass (UNS C38500)	Chrome plated (FS-QQ-C-320B)
Earthing crown	: Cu-Be (UNS C17300)	Nickel plated (FS-QQ-N-290A)
Insulator	: PTFE	-
Female contact	: Bronze (UNS C54400)	Gold plated (ISO 4523)
Locking washer	: Bronze (UNS C52100)	Nickel plated (FS-QQ-N-290A)
Other metallic parts	: Brass (UNS C38500)	Nickel plated (FS-QQ-N-290A)

Panel cut-out



Torque for mounting nut : 1 Nm

Spanner for nut : DCA.91.149.0TN or
Spanner for nut : DCG.91.149.0TN

Fixed socket , nut fixing .
Series 00 , coaxial (50Ω)

ETUDE N°

Echelle	Dessiné	29.10.98	OVU / JCH
	Contrôle	16.12.09	JPBA / CDE
	Modif.	02	16.12.09 / OVU



LEMO

CH-1024 Ecublens

ERA.00.250.CTL