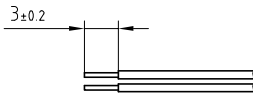
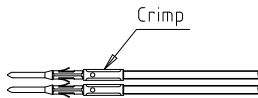


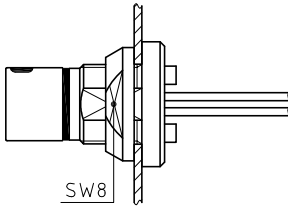
| | | |
|----------------|-------------------------------------|------------------------------|
| Outer shell | : Aluminium (AA 6262A) or (AA 6023) | Anthracite nickel |
| Earthing crown | : Cu-Be (UNS C17300) | Nickel plated (FS-QQ-N-290A) |
| Insulator | : PEEK | - |
| Male contact | : Brass (UNS C38500) | Gold plated (ISO 4523) |
| Clip | : Stainless steel | - |
| Conical nut | : Aluminium (AA 6262A) or (AA 6023) | Red anodized |
| O-ring | : Viton (FPM) | - |



1. Strip the cable according to the given dimensions .

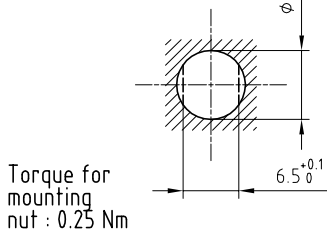


2. Fix the positioner on the crimping tool and set selector to the number corresponding to the conductor AWG as indicated on the positioner label. Fit conductor into the contacts and make sure it is visible through its inspection hole in the crimp barrel . Open crimping tool then push contact fully into positioner and complete one crimping cycle . Remove from crimping tool and check that conductor is secure in contact and shows in inspection hole .



3. Drill the panel hole and install the connector with the appropriate tool . Slide crimped contact-conductor combinations according to the insulator marking by avoiding to twist the conductors . Introduce lightly the contacts into the insulator and verify that no conductors are crossed before pushing them completely . Check that all contacts hold in the insulator by verifying their alignment at the front of the insulator and they should remain in position when each conductor is given a gentle pull . Check that retention of the contact is correct with the recommended test tool .

Panel cut-out



Crimping tool : DPC.91.701.V
 Extractor : DCF.91.050.2LT
 Male contact : FGG.00.554.ZZC
 Male positioner : DCE.91.050.0VC
 Male retention testing tool : DCK.91.050.8LRC

Spanner for conical nut : DCH.91.101.PN

Fixed socket , nut fixing , with keys (S)
(Back panel mounting) .
Series FF , multipole (4)

ETUDE N° E2932-E4096

| | | | |
|--------------|----------|------------|------------------|
| Echelle — | Dessiné | 15.10.2004 | OVU / RMO |
| | Contrôle | 05.01.2011 | JPBA / ATVI |
| | Modif. | 01 | 05.01.2011 / OVU |



LEMO

CH-1024 Ecublens

EHS.FF.304.XLC