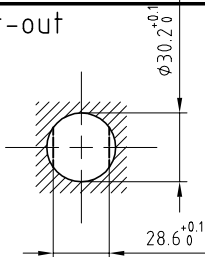


Outer shell	: Brass (UNS C38500)	Chrome plated (FS-QQ-C-320B)
Earthing crown	: Brass (UNS C38500)	Nickel plated (FS-QQ-N-290A)
Insulator	: PEEK-PDX-L-97024	-
Other metallic parts	: Brass (UNS C38500)	Nickel plated (FS-QQ-N-290A)
O-Rings	: MVQ	-

Panel cut-out



Torque for mounting nut : 17 Nm

Parts that must be ordered separately :
 Fiber-optic contact ref : PSS.F2.BB2.LCT10 or ...E30 ferrule hole 126µm
 Fiber-optic contact ref : PSS.F2.BA2.LCT10 or ...E30 ferrule hole 125µm

**Fixed socket visible shell with nut fixing ,
 with key (G) .
 Series 4K , 4FO(typeF2)**

ETUDE N° E2775

Echelle —	Dessiné	11.09.03	OVU / RMO
	Contrôle	11.09.03	RMO / CDE
	Modif.	00	11.09.03 / OVU



LEMO

CH-1024 Ecublens

EHG.4K.03C.CLZ