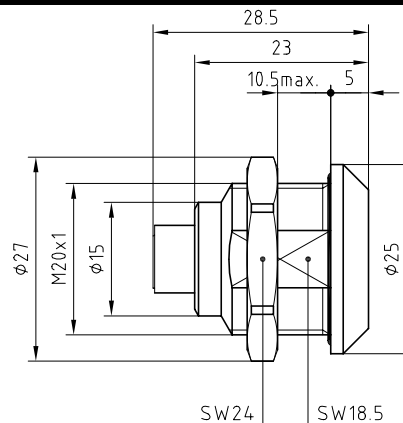
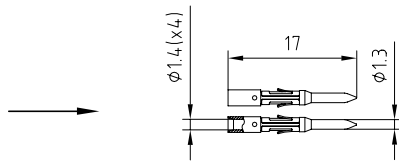
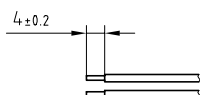


L

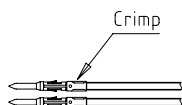


Outer shell : Brass (UNS C38500)
 Earthing crown : Brass (UNS C38500)
 Insulator : PEEK
 Male contact : Brass (UNS C34500)
 Clip : Cu-Be (UNS C17200)
 Other metallic parts : Brass (UNS C38500)
 O-rings : Silicone (MVQ)

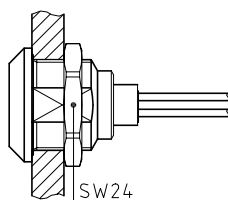
Chrome plated (FS-QQ-C-320B)
 Nickel plated (FS-QQ-N-290A)
 -
 Gold plated (ISO 4523)
 -
 Nickel plated (FS-QQ-N-290A)
 -



1. Strip the cable according to the given dimensions .

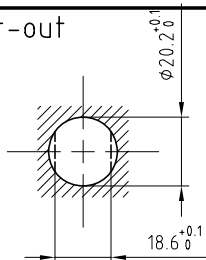


2. Fix the positioner on the crimping tool and set selector to the number corresponding to the AWG as indicated on the positioner label . Fit conductor into the contacts and make sure it is visible through its inspection hole in the crimp barrel . Open crimping tool then push contact fully into positioner and complete one crimping cycle . Remove from crimping tool and check that conductor is secure in contact and shows in inspection hole .



3. Drill the panel hole and install the connector with the appropriate tool . Slide crimped contact-conductor combinations according to the insulator marking by avoiding to twist the conductors . Introduce lightly the contacts into the insulator and verify that no conductors are crossed before pushing them completely . Check that all contacts hold in the insulator by verifying their alignment at the front of the insulator and they should remain in position when given a gentle pull to each conductor . Check that retention of the contact is correct with the recommended test tool .

Panel cut-out



Torque for mounting nut : 9 Nm

Crimping tool : DPC.91.701.V
 Extractor : DCF.91.131.2LT
 Male contact : FGG.2B.565.ZZC
 Male positioner : DCE.91.132.BVC
 Male retention testing tool : DCK.91.132.5LRC

**Fixed socket with nut fixing , with keys (L) ,
 with extended insulator .
 Series 2K , multipole (4)**

ETUDE N° E1432

Echelle —	Dessiné	04.03.09	OVU / JPBA
	Contrôle	04.03.09	JPBA/ CDE
	Modif.	00	04.03.09 / OVU



LEMO

CH-1024 Ecublens

EGL.2K.304.CYC