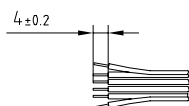
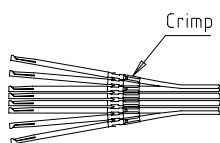


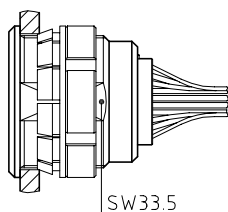
Outer shell	: Brass (UNS C38500)	Chrome plated (FS-QQ-C-320B)
Earthing crown	: Brass (UNS C38500)	Nickel plated (FS-QQ-N-290A)
Insulator	: PEEK	-
Female contact	: Bronze (UNS C54400)	Gold plated (ISO 4523)
Clip	: Cu-Be (UNS C17200)	-
Tapered washer	: Brass (UNS C38500)	Nickel plated (FS-QQ-N-290A)
Other metallic parts	: Brass (UNS C38500)	Nickel plated (FS-QQ-N-290A)



1. Strip the cable according to the given dimensions .



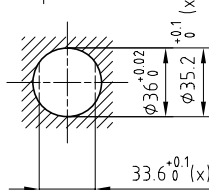
2. Fix the positioner on the crimping tool and set selector to the number corresponding to the conductor AWG as indicated on the positioner label . Fit conductor into the contacts and make sure it is visible through its inspection hole in the crimp barrel . Open crimping tool then push contact fully into positioner and complete one crimping cycle . Remove from crimping tool and check that conductor is secure in contact and shows in inspection hole .



3. Drill the panel hole and install the connector with the appropriate tool . Slide crimped contact-conductor combinations according to the insulator marking , avoiding twisting of the conductors . Fit the contacts gently into the insulator and verify that no conductors are crossed before pushing them in completely . Check that all contacts hold in the insulator by verifying their alignment at the front of the insulator and they should remain in position when each conductor is given a gentle pull .

Panel cut-out

(x) Possible without tapered washer



Torque for mounting nut : 17 Nm

Crimping tool	: DPC.91.701.V
Extractor	: DCF.91.093.5LT
Female contact	: EGG.5B.660.ZZM
Female positioner	: DCE.91.095.BVM
Female retention testing tool	: DCK.91.091.4LRM

Fixed socket with nut fixing , with key (G) ,
with extended insulator .
Series 5B , multipole (54)

ETUDE N°

Echelle

Dessiné

12.10.05

OVU / RMO

Contrôle

12.10.05

RMO / CDE

Modif.

00

12.10.05 / OVU



LEMO

CH-1024 Ecublens

EGG.5B.354.CYM