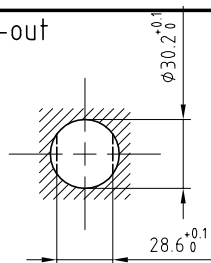


Outer shell	: Brass (UNS C38500)	Chrome plated (FS-QQ-C-320B)
Earthing crown	: Brass (UNS C38500)	Nickel plated (FS-QQ-N-290A)
Insulator	: PEEK	-
Female contact	: Bronze (UNS C54400)	Gold plated (ISO 4523)
Other metallic parts	: Brass (UNS C38500)	Nickel plated (FS-QQ-N-290A)
O-Rings	: Silicone (MVQ)	-

Panel cut-out



Torque for mounting nut : 17 Nm

Fixed socket with nut fixing , with key (G) , Series 4K , multicontact (6)

ETUDE N° E6041

Echelle	Dessiné	11.06.2012	OVU /JPBA
	Contrôle	11.06.2012	JPBA/ATVI
	Modif.	00	11.06.2012 / OVU



**LEMO**

CH-1024 Ecublens

**EGG.4K.306.CLL**