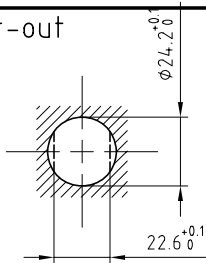


Outer shell	: Brass (UNS C38500)	Chrome plated (FS-QQ-C-320B)
Earthing crown	: Brass (UNS C38500)	Nickel plated (FS-QQ-N-290A)
Insulator	: PEEK	-
Other metallic parts	: Brass (UNS C38500)	Nickel plated (FS-QQ-N-290A)
O-Rings	: Silicone (MVQ)	-

Panel cut-out



Torque for mounting nut : 12 Nm

Parts that must be ordered separately :

Fiber-optic contact ref : PSS.F2.BB2.LCT10 or ...E30 ferrule hole 126µm
 Fiber-optic contact ref : PSS.F2.BA2.LCT10 or ...E30 ferrule hole 125µm

**Fixed socket with nut fixing ,
 with key (G) .
 Series 3K , 2FO(typeF2)**

ETUDE N° E6041

Echelle —	Dessiné	07.04.08	OVU / RMO
	Contrôle	07.04.08	RMO / CDE
	Modif.	00	07.04.08 / OVU



LEMO

CH-1024 Ecublens

EGG.3K.03A.CLZ