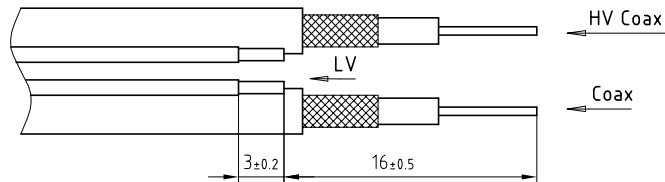
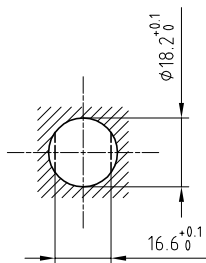


Outer shell	: Brass (UNS C38500)	Chrome plated (FS-QQ-C-320B)
Earthing crown	: Bronze (UNS C54400)	Nickel plated (FS-QQ-N-290A)
Insulator	: PEEK	-
Female contact	: Bronze (UNS C54400)	Gold plated (ISO 4523)
Locking washer	: Bronze (UNS C52100)	Nickel plated (FS-QQ-N-290A)
Other metallic parts	: Brass (UNS C38500)	Nickel plated (FS-QQ-N-290A)
Female HV coaxial contact	: (PSS.2B.401.ZLME34)	(See customer drawing)
Female coaxial contact	: (PSS.2B.250.ZLME30)	(See customer drawing)

Stripping dimensions



Panel cut-out



Torque for mounting nut : 9 Nm

Specification : To see test N°3885

Spanner for nut : DCA.91.282.2TN or
Spanner for nut : DCG.91.282.2TN

Fixed socket with nut fixing , with key (G) .
(Cable group 1) = Cable HTC-50-1-1
Series 3B , 1coax50Ω(type C) + 1HVcoax + 4LV(Ø.9)
 ETUDE N° E1358-E3248.4050

Echelle	Dessiné	11.11.2002	NHA /JPBA
	Contrôle	11.03.2014	JPBA/ATVI
	Modif.	06	11.03.2014/ OVU



CH-1024 Ecublens

EGG.3B.8H4.CLL1