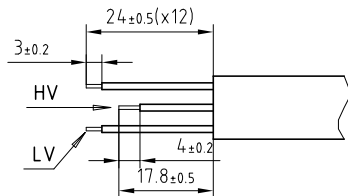
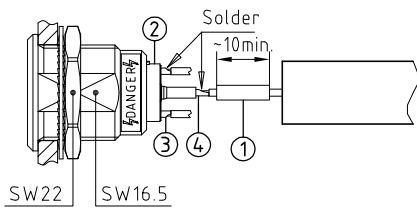


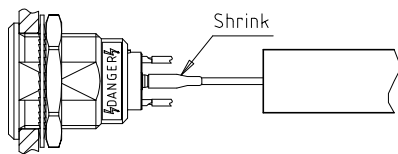
Outer shell	: Brass (UNS C38500)	Chrome plated (FS-QQ-C-320B)
Earthing crown	: Bronze (UNS C54400)	Nickel plated (FS-QQ-N-290A)
Insulators	: PEEK	-
Female contact	: Bronze (UNS C54400)	Gold plated (ISO 4523)
Male contact (HV)	: Brass (UNS C38500)	Gold plated (ISO 4523)
Gland	: Silicone (SI)	-
Locking washer	: Brass (UNS C52100)	Nickel plated (FS-QQ-N-290A)
Other metallic parts	: Brass (UNS C38500)	Nickel plated (FS-QQ-N-290A)
Heat shrink tubing	: Polyoléfine	-
Label	: Polyester	Yellow



1. Strip the cable (without screen) according to the given dimensions .

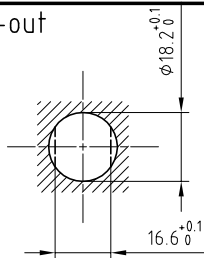


2. Drill the panel hole and install the connector with the appropriate tool . Slide a piece of heat shrink tubing (1) (not supplied) of the correct length over the dielectric of the remaining (HV) cable . Arrange the conductors according to the insulator (2) marking by avoiding to twist them . Fit conductor into the contacts (LV) (3) and the contact (HV) (4) and solder . Verify that and insulation remain clean .



3. Slide the heat shrink tubing over the contact insulating sleeve (HV) . With a heat gun fully shrink the tubing until full melting of the inner adhesive coating .

Panel cut-out



Torque for mounting nut : 9 Nm

Spanner for nut : DCA.91.282.2TN or
Spanner for nut : DCG.91.282.2TN

Fixed socket with nut fixing , with key (G) .
Séries 3B , 1HV(φ0.9) + 12LV(φ0.9)

Echelle	Dessiné	07.08.2012	OVU /JPBA
	Contrôle	07.08.2012	JPBA/ATVI
	Modif.	00	07.08.2012/ OVU

ETUDE N° E2428



CH-1024 Ecublens

EGG.3B.712.CJL