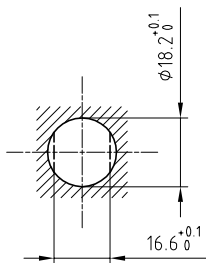


|                      |                       |                              |
|----------------------|-----------------------|------------------------------|
| Outer shell          | : Brass (UNS C38500)  | Chrome plated (FS-QQ-C-320B) |
| Earthing crown       | : Bronze (UNS C54400) | Nickel plated (FS-QQ-N-290A) |
| Insulator            | : PEEK                | -                            |
| Female contact       | : Bronze (UNS C54400) | Gold plated (ISO 27874)      |
| Locking washer       | : Bronze (UNS C52100) | Nickel plated (FS-QQ-N-290A) |
| Other metallic parts | : Brass (UNS C38500)  | Nickel plated (FS-QQ-N-290A) |

Panel cut-out



Torque for mounting nut : 9 Nm

Spanner for nut : DCA.91.282.2TN or  
Spanner for nut : DCG.91.282.2TN

**Fixed socket with nut fixing , with key (G) .  
Series 3B , multipole (30)**

|         |          |            |                 |
|---------|----------|------------|-----------------|
| Echelle | Dessiné  | 29.09.2015 | OVU / NHA       |
|         | Contrôle | 29.09.2015 | NHA / ATVI      |
|         | Modif.   | 00         | 29.09.2015/ OVU |

ETUDE N°



**LEMO**

CH-1024 Ecublens

**EGG.3B.330.CLL**