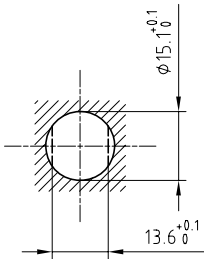


Outer shell	: Brass (UNS C38500)	Chrome plated (FS-QQ-C-320B)
Earthing crown	: Bronze (UNS C54400)	Nickel plated (FS-QQ-N-290A)
Insulator	: PEEK	-
Female contact	: Bronze (UNS C54400)	Gold plated (ISO 4523)
Locking washer	: Bronze (UNS C52100)	Nickel plated (FS-QQ-N-290A)
Other metallic parts	: Brass (UNS C38500)	Nickel plated (FS-QQ-N-290A)

Panel cut-out



Torque for mounting nut : 6 Nm

Spanner for nut : DCA.91.231.7TN or  
Spanner for nut : DCG.91.231.7TN

**Fixed socket , with nut fixing , with key (G) ,  
Series 2B , multipole (19)**

ETUDE N°

Echelle —	Dessiné	23.10.08	OVU / RMO
	Contrôle	23.10.08	RMO / CDE
	Modif.	00	23.10.08 / OVU



**LEMO**

CH-1024 Ecublens

**EGG.2B.319.CLL**