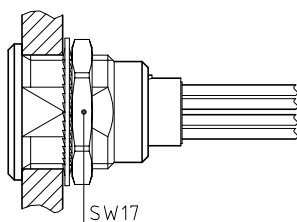
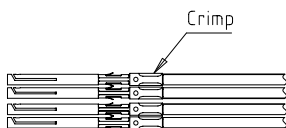


Outer shell	: Brass (UNS C38500)	Chrome plated (FS-QQ-C-320B)
Earthing crown	: Bronze (UNS C54400)	Nickel plated (FS-QQ-N-290A)
Insulator	: PEEK	-
Female contact	: Bronze (UNS C54400)	Gold plated (ISO 4523)
Clip	: Cu-Be (UNS C17200)	-
Locking washer	: Bronze (UNS C52100)	Nickel plated (FS-QQ-N-290A)
Other metallic parts	: Brass (UNS C38500)	Nickel plated (FS-QQ-N-290A)

4±0.2

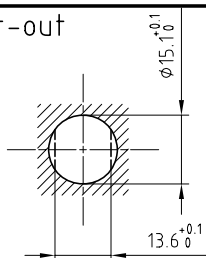


1. Strip the cable according to the given dimensions .

2. Fix the positioner on the crimping tool and set selector to the number corresponding to the conductor AWG as indicated on the positioner label . Fit conductor into the contacts and make sure it is visible through its inspection hole in the crimp barrel . Open crimping tool then push contact fully into positioner and complete one crimping cycle . Remove from crimping tool and check that conductor is secure in contact and shows in inspection hole .

3. Drill the panel hole and install the connector with the appropriate tool . Slide crimped contact-conductor combinations according to the insulator marking , avoiding twisting of the conductors . Fit the contacts gently into the insulator and verify that no conductors are crossed before pushing them in completely . Check that all contacts hold in the insulator by verifying their alignment at the front of the insulator and they should remain in position when each conductor is given a gentle pull . Check that retention of the contact is correct with the recommended test tool .

Panel cut-out



Torque for mounting nut : 6 Nm

Crimping tool : DPC.91.701.V
Extractor : DCF.91.090.2LT
Female contact : EGG.2B.660.ZZM
Female positioner : DCE.91.092.BVM
Female retention testing tool : DCK.91.091.4LRM

Spanner for nut : DCA.91.231.7TN or
Spanner for nut : DCG.91.231.7TN

**Fixed socket with nut fixing , with key (G) ,
with extended insulator .
Series 2B , multipole (10)**

ETUDE N°

Echelle

Dessiné 10.01.08 OVU / RMO

Contrôle 10.01.08 RMO / CDE

Modif. 00 10.01.08 / OVU



LEMO

CH-1024 Ecublens

EGG.2B.310.CYM