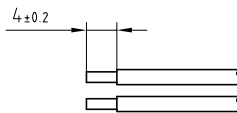
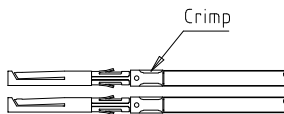


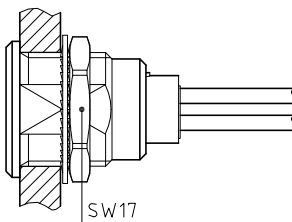
Outer shell	: Brass (UNS C38500)	Chrome plated (FS-QQ-C-320B)
Earthing crown	: Bronze (UNS C54400)	Nickel plated (FS-QQ-N-290A)
Insulator	: PEEK	-
Female contact	: Bronze (UNS C54400)	Gold plated (ISO 27874)
Clip	: Cu-Be (UNS C17200)	-
Locking washer	: Bronze (UNS C52100)	Nickel plated (FS-QQ-N-290A)
Other metallic part	: Brass (UNS C38500)	Nickel plated (FS-QQ-N-290A)



1. Strip the cable according to the given dimensions .

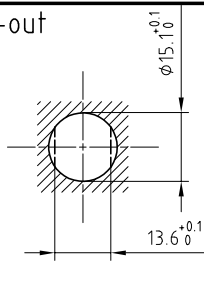


2. Fix the positioner on the crimping tool and set selector to the number corresponding to the conductor AWG as indicated on the positioner label . Fit conductor into the contacts and make sure it is visible through its inspection hole in the crimp barrel . Open crimping tool then push contact fully into positioner and complete one crimping cycle . Remove from crimping tool and check that conductor is secure in contact and shows in inspection hole .



3. Drill the panel hole and install the connector with the appropriate tool . Slide crimped contact-conductor combinations according to the insulator marking , avoiding twisting of the conductors . Fit the contacts gently into the insulator and verify that no conductors are crossed before pushing them in completely . Check that all contacts hold in the insulator by verifying their alignment at the front of the insulator and they should remain in position when each conductor is given a gentle pull . Check that retention of the contact is correct with the recommended test tool .

Panel cut-out



Torque for mounting nut : 6 Nm

Crimping tool : DPC.91.701.V  
Extractor : DCF.91.131.2LT  
Female contact : EGG.2B.665.ZZM  
Female positioner : DCE.91.132.BVM  
Female retention testing tool : DCK.91.132.5LRM

Spanner for nut : DCA.91.231.7TN or  
Spanner for nut : DCG.91.231.7TN

**Fixed socket with nut fixing , with key (G) ,  
with extended insulator .  
Series 2B , multipole (4)**

ETUDE N°

Echelle —	Dessiné	28.11.2018	OVU / NHA
	Contrôle	28.11.2018	NHA / ATVI
	Modif.	00	28.11.2018 / OVU



**LEMO**

LEMO SA  
Chemin des Champs-Courbes 28  
1024 Ecublens - SWITZERLAND

Tel. (+41 21) 695 16 00  
email : info@lemo.com  
www.lemo.com

**EGG.2B.304.CYM**