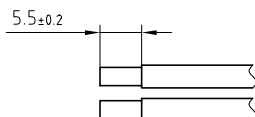
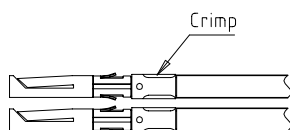


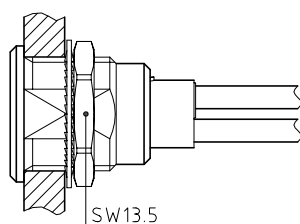
| | | |
|----------------------|-----------------------|------------------------------|
| Outer shell | : Brass (UNS C38500) | Chrome plated (FS-QQ-C-320B) |
| Earthing crown | : Bronze (UNS C54400) | Nickel plated (FS-QQ-N-290A) |
| Insulator | : PEEK | - |
| Female contact | : Bronze (UNS C54400) | Gold plated (ISO 4523) |
| Clip | : Cu-Be (UNS C17200) | - |
| Locking washer | : Bronze (UNS C52100) | Nickel plated (FS-QQ-N-290A) |
| Other metallic parts | : Brass (UNS C38500) | Nickel plated (FS-QQ-N-290A) |



1. Strip the cable according to the given dimensions .

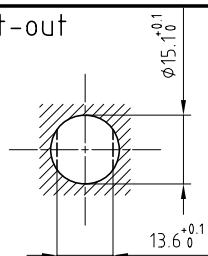


2. Fix the positioner on the crimping tool and set selector to the number corresponding to the conductor AWG as indicated on the positioner label . Fit conductor into the contacts and make sure it is visible through its inspection hole in the crimp barrel . Open crimping tool then push contact fully into positioner and complete one crimping cycle . Remove from crimping tool and check that conductor is secure in contact and shows in inspection hole .



3. Drill the panel hole and install the connector with the appropriate tool . Slide crimped contact-conductor combinations according to the insulator marking , avoiding twisting of the conductors . Fit the contacts gently into the insulator and verify that no conductors are crossed before pushing them in completely . Check that all contacts hold in the insulator by verifying their alignment at the front of the insulator and they should remain in position when each conductor is given a gentle pull .

Panel cut-out



Torque for mounting nut : 6 Nm

Crimping tool : DPC.91.101.A
Extractor : DCF.91.202.2LT
Female contact : EGG.2B.675.ZZM
Female positioner : DCE.91.202.BVCM

Spanner for nut : DCA.91.231.7TN or
Spanner for nut : DCG.91.231.7TN

**Fixed socket with nut fixing , with key (G) ,
with extended insulator .
Series 2B , multipole (2)**

ETUDE N°

Echelle

—

Dessiné 05.06.07 OVU / RMO

Contrôle 05.06.07 RMO / CDE

Modif. 00 05.06.07 / OVU



LEMO

CH-1024 Ecublens

EGG.2B.302.CYM