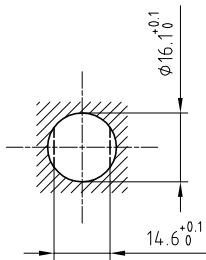


Outer shell	: Brass (UNS C38500)	Chrome plated (FS-QQ-C-320B)
Earthing crown	: Bronze (UNS C54400)	Nickel plated (FS-QQ-N-290A)
Insulator	: PEEK	-
Female contact	: Bronze (UNS C54400)	Gold plated (ISO 4523)
Other metallic parts	: Brass (UNS C38500)	Nickel plated (FS-QQ-N-290A)
O-rings	: Silicone (MVQ)	-

Panel cut-out



Torque for mounting nut : 7 Nm

Fixed socket with nut fixing , with key (G) , Series 1K , multipole (8)

ETUDE N° E6041

Echelle —	Dessiné	19.12.2001	BC / RMO
	Contrôle	01.04.2014	JPBA/ATVI
	Modif.	01	01.04.2014/ OVU



LEMO

CH-1024 Ecublens

EGG.1K.308.CLL