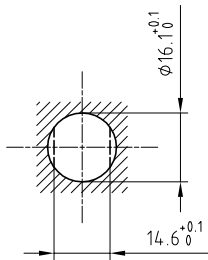


Outer shell	: Brass (UNS C38500)	Chrome plated (FS-QQ-C-320B)
Earthing crown	: Bronze (UNS C54400)	Gold plated (ISO 4523)
Insulator	: PTFE	-
Female contact	: Bronze (UNS C54400)	Gold plated (ISO 4523)
Other metallic parts	: Brass (UNS C38500)	Nickel plated (FS-QQ-N-290A)
O-rings	: Silicone (MVQ)	-

Panel cut-out



Torque for mounting nut : 7 Nm

**Fixed socket with nut fixing , with key (G) ,
Series 1K , coaxial (50Ω)**

ETUDE N° E6041

Echelle —	Dessiné	02.12.2013	OVU / JPBA
	Contrôle	02.12.2013	JPBA / ATVI
	Modif.	00	02.12.2013 / OVU



LEMO

CH-1024 Ecublens

EGG.1K.250.CTL