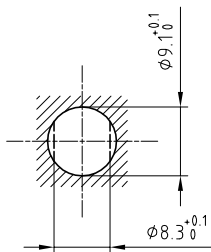


Outer shell	: Brass (UNS C38500)	Chrome plated (FS-QQ-C-320B)
Earthing crown	: Bronze (UNS C54400)	Nickel plated (FS-QQ-N-290A)
Insulator	: PEEK	-
Female contact	: Bronze (UNS C54400)	Gold plated (ISO 4523)
Locking washer	: Bronze (UNS C52100)	Nickel plated (FS-QQ-N-290A)
Other metallic parts	: Brass (UNS C38500)	Nickel plated (FS-QQ-N-290A)

Panel cut-out



Torque for mounting nut : 2.5 Nm

Spanner for nut : DCA.91.161.1TN or  
Spanner for nut : DCG.91.161.1TN

**Fixed socket with nut fixing , with key (G) ,  
Series 0B , multipole (5)**

ETUDE N° E9329-E10416

Echelle —	Dessiné	07.02.1997	LMO / JCHU
	Contrôle	18.01.2013	JPBA / ATVI
	Modif.	03	18.01.2013 / OVU



**LEMO**

CH-1024 Ecublens

**EGG.0B.305.CLL**