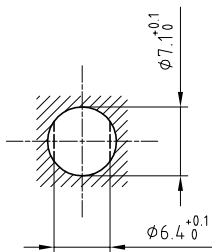


Outer shell	: Brass (UNS C38500)	Chrome plated (FS-QQ-C-320B)
Earthing crown	: Cu-Be (UNS C17300)	Nickel plated (FS-QQ-N-290A)
Insulator	: PEEK	-
Female contact	: Bronze (UNS C54400)	Gold plated (ISO 27874)
Locking washer	: Bronze (UNS C52100)	Nickel plated (FS-QQ-N-290A)
Other metallic parts	: Brass (UNS C38500)	Nickel plated (FS-QQ-N-290A)

Panel cut-out



Torque for mounting nut : 1 Nm

Spanner for nut : DCA.91.149.0TN or
Spanner for nut : DCG.91.149.0TN

**Fixed socket , with nut , with key (G) .
Series 00 , multipole $\phi 0.35$ (5)**

Echelle —	Dessiné	30.10.2017	OVU / NHA
	Contrôle	30.10.2017	NHA / ATVI
	Modif.	00	30.10.2017/ OVU

ETUDE N° E1347-E10804-E10536



LEMO

LEMO SA
Chemin des Champs-Courbes 28
1024 Ecublens - SWITZERLAND

Tel. (+41 21) 695 16 00
email : info@lemo.com
www.lemo.com

EGG.00.305.CLL