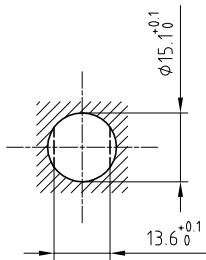


Outer shell	: Brass (UNS C38500)	Chrome plated (FS-QQ-C-320B)
Earthing crown	: Bronze (UNS C54400)	Gold plated (ISO 27874)
Male sleeve	: Brass (UNS C38500)	Gold plated (ISO 27874)
Insulators	: PTFE	-
Femelle contact	: Bronze (UNS C54400)	Gold plated (ISO 27874)
Earthing washer	: Brass (UNS C27400)	Cu-Zn alloy
Notched nut	: Brass (UNS C38500)	Chrome plated (FS-QQ-C-320B)
Locking washer	: Bronze (UNS C52100)	Nickel plated (FS-QQ-N-290A)
Other metallic part	: Brass (UNS C38500)	Nickel plated (FS-QQ-N-290A)

Panel cut-out



Torque for mounting nut : 6 Nm

Spanner for notched nut : DCH.91.201.PA

**Fixed socket , with nut fixing .  
(Back panel mounting) .  
Series 2S , triaxial (75Ω)**

ETUDE N° E898-E1833-E7114

Echelle —	Dessiné	17.11.2016	OVU / NHA
	Contrôle	17.11.2016	NHA / ATVI
	Modif.	00	17.11.2016 / OVU



CH-1024 Ecublens

**EEP.2S.675.CTL**