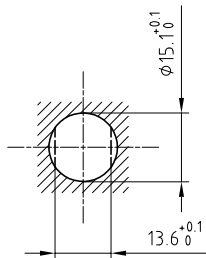


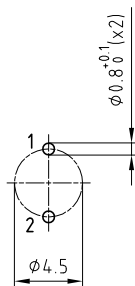
Outer shell	: Brass (UNS C38500)	Chrome plated (FS-QQ-C-320B)
Earthing crown	: Bronze (UNS C54400)	Nickel plated (FS-QQ-N-290A)
Insulator	: PEEK	-
Female contact	: Bronze (UNS C54400)	Gold plated (ISO 27874)
Male contact	: Brass (UNS C38500)	Gold plated (ISO 27874)
Notched nut	: Brass (UNS C38500)	Chrome plated (FS-QQ-C-320B)
Locking washer	: Bronze (UNS C52100)	Nickel plated (FS-QQ-N-290A)

Panel cut-out



Torque for mounting nut : 6 Nm

PCB drilling pattern



Spanner for notched nut : DCH.91.201.PA

**Fixed socket , with nut fixing .  
for PCB . (Back panel mounting) .  
Series 2S , multipole (2)**

ETUDE N° E1833-E7114-E7218-E1388

Echelle	Dessiné	04.11.2019	OVU / NHA
	Contrôle	04.11.2019	NHA / ATVI
	Modif.	00	04.11.2019 / OVU



**LEMO**

LEMO SA  
Chemin des Champs-Courbes 28  
1024 Ecublens - SWITZERLAND

Tel. (+41 21) 695 16 00  
email : info@lemo.com  
www.lemo.com

**EPP.2S.302.CLNY**