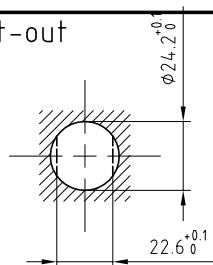


Outer shell	: Brass (UNS C38500)	Chrome plated (FS-QQ-C-320B)
Earthing crown	: Brass (UNS C38500)	Nickel plated (FS-QQ-N-290A)
Insulator	: PEEK	-
Conical nut	: Brass (UNS C38500)	Chrome plated (FS-QQ-C-320B)
Male contact	: Brass (UNS C38500)	Gold plated (ISO 27874)
Other metallic part	: Brass (UNS C38500)	Nickel plated (FS-QQ-N-290A)
O-Rings	: Silicone (MVQ)	-

Panel cut-out



Torque for mounting nut : 12 Nm

**Fixed socket with nut fixing , with keys (L) .  
(Back panel mounting) .  
Series 3K , multipole (4)**

ETUDE N° E1826

Echelle —	Dessiné	05.04.2018	OVU / NHA
	Contrôle	05.04.2018	NHA / ATVI
	Modif.	00	05.04.2018/ OVU



**LEMO**

LEMO SA  
Chemin des Champs-Courbes 28  
1024 Ecublens - SWITZERLAND

Tel. (+41 21) 695 16 00  
email : info@lemo.com  
www.lemo.com

**EEL.3K.304.CLA**