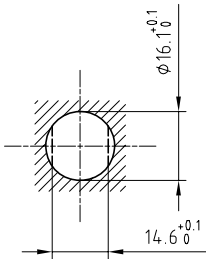


Outer shell	: Brass (UNS C38500)	Chrome plated (FS-QQ-C-320B)
Earthing crown	: Bronze (UNS C54400)	Nickel plated (FS-QQ-N-290A)
Insulator	: PEEK	-
Female contact	: Bronze (UNS C54400)	Gold plated (ISO 4523)
Notched nut	: Brass (UNS C38500)	Chrome plated (FS-QQ-C-320B)
Other metallic part	: Brass (UNS C38500)	Nickel plated (FS-QQ-N-290A)
O-rings	: Silicone (MVQ)	-

Panel cut-out



Torque for mounting nut : 7 Nm

Spanner for notched nut : DCH.91.201.PA

Fixed socket , nut fixing , with key (G) ,
(Back panel mounting) .
Series 1K , multipole (14)

ETUDE N° E1826

Echelle

Dessiné 15.11.07 OVU / RMO

Contrôle 15.11.07 RMO / CDE

Modif. 00 15.11.07 / OVU



LEMO

CH-1024 Ecublens

EEG.1K.314.CLL