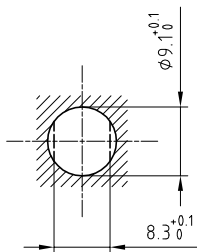


Outer shell	: Brass (UNS C38500)	Chrome plated (FS-QQ-C-320B)
Earthing crown	: Bronze (UNS C54400)	Nickel plated (FS-QQ-N-290A)
Insulator	: PEEK	-
Female contact	: Bronze (UNS C54400)	Gold plated (ISO 27874)
Notched nut	: Brass (UNS C38500)	Chrome plated (FS-QQ-C-320B)
Locking washer	: Bronze (UNS C52100)	Nickel plated (FS-QQ-N-290A)
Other metallic part	: Brass (UNS C38500)	Nickel plated (FS-QQ-N-290A)

Panel cut-out



Torque for mounting nut : 2.5 Nm

Spanner for notched nut : DCH.91.121.PA

**Fixed socket with nut fixing , with key (G) ,  
(Back panel mounting) .  
Series 0B , multipole (4)**

ETUDE N° E1201-E10416

Echelle —	Dessiné	18.10.2016	OVU / NHA
	Contrôle	18.10.2016	NHA / ATVI
	Modif.	00	18.10.2016 / OVU



**LEMO**

CH-1024 Ecublens

**EEG.0B.304.CLL**