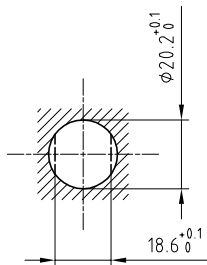


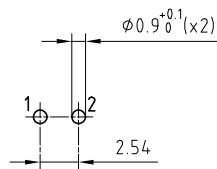
Outer shell	: Brass (UNS C38500)	Chrome plated (FS-QQ-C-320B)
Earthing crown	: Brass (UNS C38500)	Nickel plated (FS-QQ-N-290A)
Insulator	: PEEK	-
Female contact	: Bronze (UNS C54400)	Gold plated (ISO 27874)
Clip	: Cu-Be (UNS C17200)	-
Notched nut	: Brass (UNS C38500)	Chrome plated (FS-QQ-C-320B)
Other metallic part	: Brass (UNS C38500)	Nickel plated (FS-QQ-N-290A)
Adaptor rivet	: Brass	Gold plated (ISO 27874)
O-rings	: Silicone (MVQ)	-
Contact wire	: Brass (UNS C27400)	Tinned
Position insert	: FEP	-

Panel cut-out



Torque for mounting nut : 9 Nm

A-A cross-section (PCB drilling pattern)



Spanner for notched nut : DCH.91.251.PA

Fixed socket , nut fixing , with keys (B) , with elbow (90°) contact for PCB . (Back panel mounting) . Series 2K , multipole (2)

ETUDE N° E1826-E6296

Echelle —	Dessiné	17.09.2015	OVU / NHA
	Contrôle	22.05.2017	NHA / ATVI
	Modif.	01	22.05.2017/ OVU



LEMO

CH-1024 Ecublens

EEB.2K.302.CLV