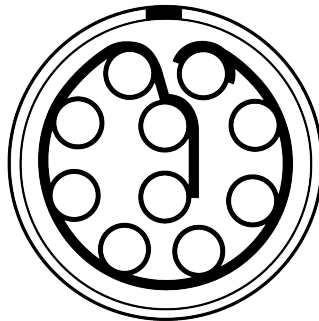
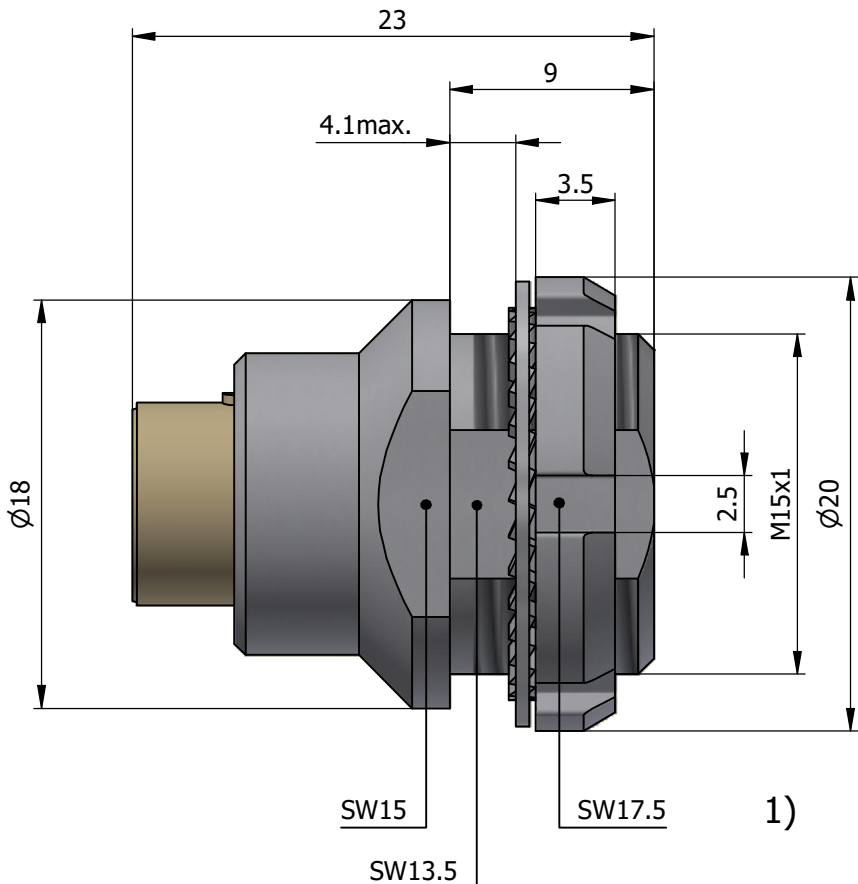
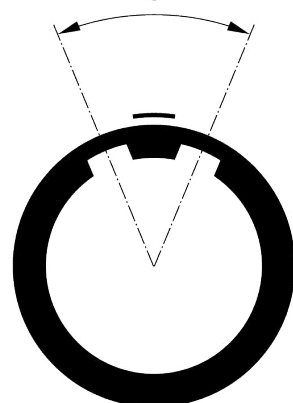


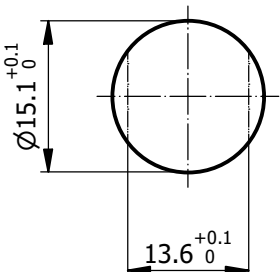
All dimensions are in millimeters (mm)



45°



Recommended Panel Cut-Out



Mounting nut torque (Nm)
Metal shell = 6.0
Plastic shell = 0.8

Note:

1) This picture is generic and for illustrative purposes only, and may show different keying, materials, colour, finish, and contact configuration. Minor shape or feature variations to actual item may be present.

All additional information are documented on the datasheet (See below link or QR Code)
www.lemo.com/pdf/EEB.2B.310.CYM.pdf



Fixed socket, nut fixing (back panel mounting)


Series 2B

**LEMP**

LEMO SA
Chemin des Champs-Courbes 28
1024 Ecublens - SWITZERLAND

Tel. (+41 21) 695 16 00
email : info@lemo.com
www.lemo.com

CD

Drawn	19.11.2024	MARI/MAR
Checked	19.11.2024	OBAR
Modified	00	19.11.2024/MAR
	DO NOT SCALE DRAWING	

EEB.2B.310.CYM

Model
Alignment Key
Series
Insert Config.
Housing
Insulator
Contact
Variant

EEB.2B.310.CYM

EEB.2B.310.CYM