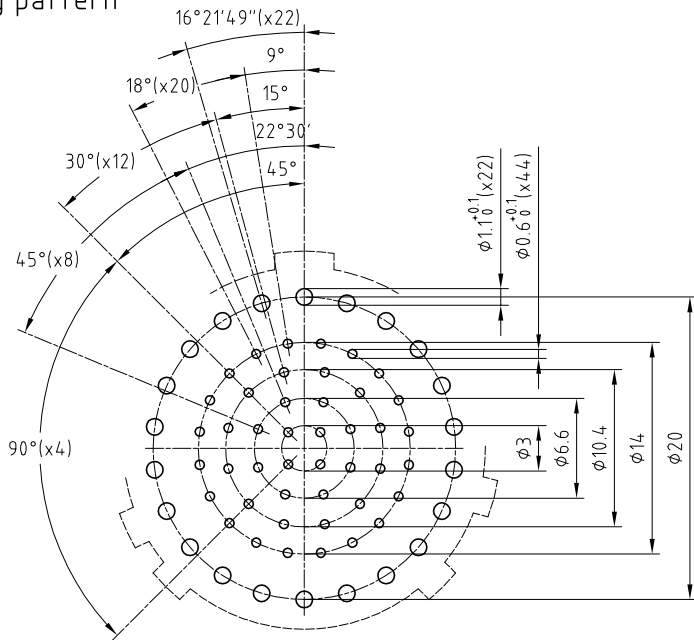
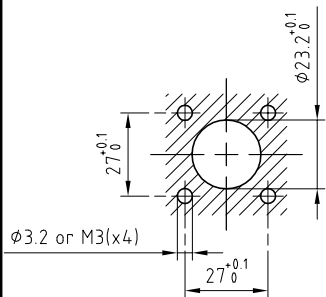


| | | |
|---|--|-------------------------|
| Outer shell | : Aluminium (AA 6262A) or (AA 6023) | Anthracite nickel |
| Earthing crown+gland | : Brass (UNS C38500)+Fluorosilicone (FVMQ) | Gold plated (ISO 27874) |
| Insulator | : PEEK | - |
| Female contacts ($\phi 0.7+\phi 1.3$) | : Bronze (UNS C54400) | Gold plated (ISO 27874) |
| O-ring | : Viton (FPM) | - |

PCB drilling pattern



Panel cut-out



Fixed socket , square flange , with keys (R) ,
4 holes fixing , for PCB .
Series 5M , multipole 44LV($\phi 0.7$) + 22LV($\phi 1.3$)

ETUDE N° E6367-E10888-E4159

| | | | |
|---------|----------|-----------------|------------|
| Echelle | Dessiné | 14.09.2016 | OVU / NHA |
| | Contrôle | 14.09.2016 | NHA / ATVI |
| Modif. | 00 | 14.09.2016/ OVU | |



LEMO

CH-1024 Ecublens

EDR.5M.366.XRY44