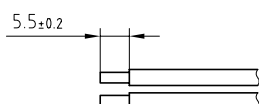
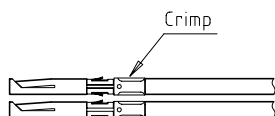


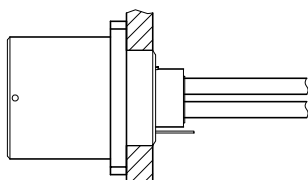
Outer shell	: Brass (UNS C38500)	Chrome plated (FS-QQ-C-320B)
Earthing crown with tag	: Brass (UNS C38500)	Nickel plated (FS-QQ-N-290A)
Insulator	: PEEK	-
Female contact	: Bronze (UNS C54400)	Gold plated (ISO 4523)
Clip	: Cu-Be (UNS C17200)	-
Other metallic part	: Brass (UNS C38500)	Nickel plated (FS-QQ-N-290A)
O-rings	: Silicone (MVQ)	-



1. Strip the cable according to the given dimensions .

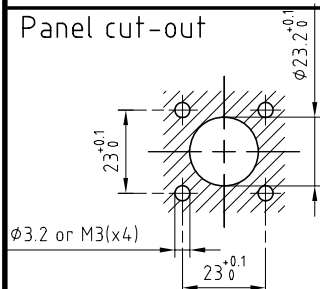


2. Fix the positioner on the crimping tool and set selector to the number corresponding to the conductor AWG as indicated on the positioner label . Fit conductor into the contacts and make sure it is visible through its inspection hole in the crimp barrel . Open crimping tool then push contact fully into positioner and complete one crimping cycle . Remove from crimping tool and check that conductor is secure in contact and shows in inspection hole .



3. Drill the panel hole and install the connector . Slide crimped contact-conductor combinations according to the insulator marking avoiding twisting of the conductors . Fit the contacts gently into the insulator and verify that no conductors are crossed before pushing them in completely . Check that all contacts hold in the insulator by verifying their alignment at the front of the insulator and they should remain in position when each conductor is given a gentle pull .

Panel cut-out



Crimping tool
Extractor
Female contact
Female positioner

: DPC 91.101.A
: DCC 91.202.5LA
: EGG.3B.675.ZZM
: DCE.91.203.BVCM

Fixed socket , square flange , with key (G) ,
4 holes fixing and earthing tag , with extended insulator .
Series 3K , multipole (4)

ETUDE N° E2328

Echelle

—

Dessiné	17.11.08	OVU / RMO
Contrôle	17.11.08	RMO / CDE
Modif.	00	17.11.08 / OVU



LEMO

CH-1024 Ecublens

EDG.3K.304.CYM