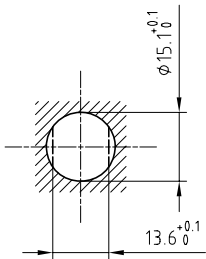


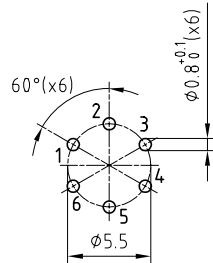
Outer shell	: Brass (UNS C38500)	Chrome plated (FS-QQ-C-320B)
Earthing crown	: Bronze (UNS C54400)	Nickel plated (FS-QQ-N-290A)
Insulator	: PEEK	-
Female contact	: Bronze (UNS C54400)	Gold plated (ISO 4523)
Male contact	: Brass (UNS C38500)	Gold plated (ISO 4523)
Notched nut	: Brass (UNS C38500)	Chrome plated (FS-QQ-C-320B)
Locking washer	: Bronze (UNS C52100)	Nickel plated (FS-QQ-N-290A)
Other metallic parts	: Brass (UNS C38500)	Nickel plated (FS-QQ-N-290A)

Panel cut-out



Torque for mounting nut : 6 Nm

PCB drilling pattern



Spanner for notched nut : DCH.91.201.PA

Fixed socket , with two nuts ,  
for PCB . (Back panel mounting) .  
Series 2S , multiple (6)

ETUDE N° E1051

Echelle —	Dessiné	22.11.06	OVU / RMO
	Contrôle	22.11.06	RMO / CDE
	Modif.	00	22.11.06 / RMO



**LEMO**

CH-1024 Ecublens

**ECP.2S.306.CLN**