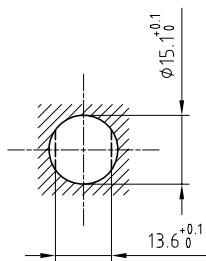


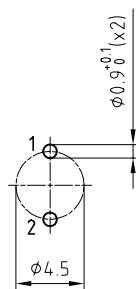
Outer shell	: Brass (UNS C38500)	Chrome plated (FS-QQ-C-320B)
Earthing crown	: Bronze (UNS C54400)	Nickel plated (FS-QQ-N-290A)
Insulator	: PEEK	-
Female contact	: Bronze (UNS C54400)	Gold plated (ISO 4523)
Male contact	: Brass (UNS C38500)	Gold plated (ISO 4523)
Notched nut	: Brass (UNS C38500)	Chrome plated (FS-QQ-C-320B)
Locking washer	: Bronze (UNS C52100)	Nickel plated (FS-QQ-N-290A)
Other metallic parts	: Brass (UNS C38500)	Nickel plated (FS-QQ-N-290A)

Panel cut-out



Torque for mounting nut : 6 Nm

PCB drilling pattern



Spanner for notched nut : DCH.91.201.PA

**Fixed socket , with two nuts ,  
for PCB . (Back panel mounting) .  
Series 2S , multipole (2)**

ETUDE N° E1388

Echelle

Dessiné	16.12.05	OVU / RMO
Contrôle	16.12.05	RMO / CDE
Modif.	00	16.12.05 / OVU



**LEMO**

CH-1024 Ecublens

**ECP.2S.302.CLN**