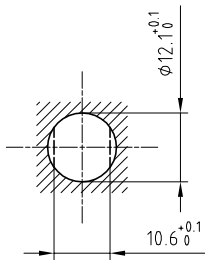


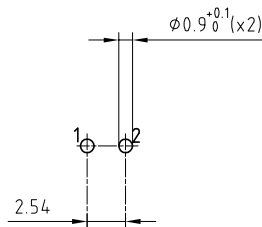
Outer shell	: Brass (UNS C38500)	Chrome plated (FS-QQ-C-320B)
Earthing crown	: Bronze (UNS C54400)	Nickel plated (FS-QQ-N-290A)
Insulator	: PEEK	-
Female contact	: Bronze (UNS C54400)	Gold plated (ISO 4523)
Male contact	: Brass (UNS C38500)	Gold plated (ISO 4523)
Notched nut	: Brass (UNS C38500)	Chrome plated (FS-QQ-C-320B)
Locking washer	: Bronze (UNS C52100)	Nickel plated (FS-QQ-N-290A)
Other metallic parts	: Brass (UNS C38500)	Nickel plated (FS-QQ-N-290A)
Contact wire	: Bronze (UNS C27400)	Tinned
Position insert	: FEP	-

Panel cut-out



Torque for mounting nut : 4.5 Nm

A-A cross-section (PCB drilling pattern)



Spanner for notched nut : DCH.91.161.PA

**Fixed socket , with two nuts , with elbow (90°)
contact for PCB . (Back panel mounting) .
Series 1S , multipole (2)**

ETUDE N° E1812

Echelle —	Dessiné	24.01.2006	RMO / RMO
	Contrôle	15.03.2010	JPBA/ CDE
	Modif.	02	15.03.2010/ OVU



LEMO

CH-1024 Ecublens

ECP.1S.302.CLV