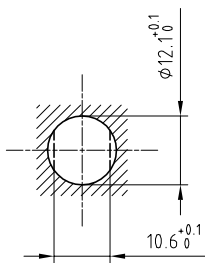


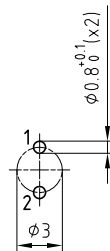
Outer shell	: Brass (UNS C38500)	Chrome plated (FS-QQ-C-320B)
Earthing crown	: Bronze (UNS C54400)	Nickel plated (FS-QQ-N-290A)
Insulator	: PEEK	-
Female contact	: Bronze (UNS C54400)	Gold plated (ISO 4523)
Male contact	: Brass (UNS C38500)	Gold plated (ISO 4523)
Notched nut	: Brass (UNS C38500)	Chrome plated (FS-QQ-C-320B)
Locking washer	: Bronze (UNS C52100)	Nickel plated (FS-QQ-N-290A)
Other metallic parts	: Brass (UNS C38500)	Nickel plated (FS-QQ-N-290A)

Panel cut-out



Torque for mounting nut : 4.5 Nm

PCB drilling pattern



Spanner for notched nut : DCH.91.161.PA

**Fixed socket , with two nuts ,
for PCB . (Back panel mounting) .
Series 1S , multipole (2)**

ETUDE N° E1685

Echelle —	Dessiné	12.04.2012	OVU /JPBA
	Contrôle	12.04.2012	JPBA/ATVI
	Modif.	00	12.04.2012/ OVU



LEMO

CH-1024 Ecublens

ECP.1S.302.CLN