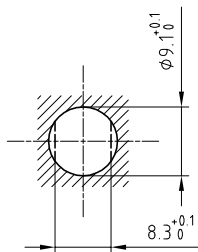


DANGER

Outer shell	: Brass (UNS C38500)	Chrome plated (FS-QQ-C-320B)
Earthing crown	: Bronze (UNS C54400)	Gold plated (ISO 27874)
Insulator	: PTFE	-
Female contact	: Bronze (UNS C54400)	Gold plated (ISO 27874)
Notched nut	: Brass (UNS C38500)	Chrome plated (FS-QQ-C-320B)
Locking washer	: Bronze (UNS C52100)	Nickel plated (FS-QQ-N-290A)
Other metallic parts	: Brass (UNS C38500)	Nickel plated (FS-QQ-N-290A)
Label	: Polyester	Yellow

Panel cut-out



Torque for mounting nut : 2.5 Nm

Spanner for notched nut : DCH.91.121.PA

**Fixed socket , with two nuts .
(Back panel mounting) .
Series 0S , (1) HV(φ0.9)**

ETUDE N° E1743-E10630-E7198

Echelle	Dessiné	22.03.2018	OVU / NHA
	Contrôle	22.03.2018	NHA / ATVI
	Modif.	00	22.03.2018/ OVU



LEMO

LEMO SA
Chemin des Champs-Courbes 28
1024 Ecublens - SWITZERLAND

Tel. (+41 21) 695 16 00
email : info@lemo.com
www.lemo.com

ECP.0S.403.CTL