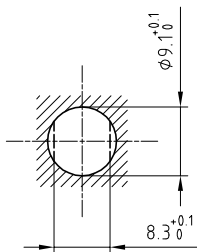


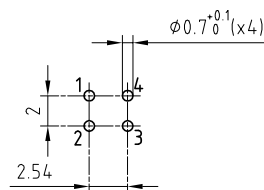
Outer shell	: Brass (UNS C38500)	Chrome plated (FS-QQ-C-320B)
Earthing crown	: Bronze (UNS C54400)	Nickel plated (FS-QQ-N-290A)
Insulator	: PEEK	-
Female contact	: Bronze (UNS C54400)	Gold plated (ISO 4523)
Male contact	: Brass (UNS C38500)	Gold plated (ISO 4523)
Notched nut	: Brass (UNS C38500)	Chrome plated (FS-QQ-C-320B)
Locking washer	: Bronze (UNS C52100)	Nickel plated (FS-QQ-N-290A)
Other metallic parts	: Brass (UNS C38500)	Nickel plated (FS-QQ-N-290A)
Contact wire	: Bronze (UNS C27400)	Tinned
Position insert	: POM	-

Panel cut-out



Torque for mounting nut : 2.5 Nm

A-A cross-section (PCB drilling pattern)



Spanner for notched nut : DCH.91.121.PA

**Fixed socket , with two nuts , with elbow (90°)
contact for PCB . (Back panel mounting) .
Series 0S , multipole (4)**

ETUDE N° E1743-E1812

Echelle	Dessiné	16.01.1990	MRI / RMO
	Contrôle	16.06.2011	JPBA/ATVI
	Modif.	01	16.06.2011/ OVU



LEMO

CH-1024 Ecublens

ECP.0S.304.CLV