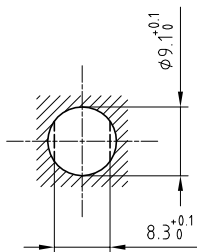


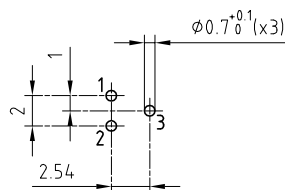
|                      |                       |                              |
|----------------------|-----------------------|------------------------------|
| Outer shell          | : Brass (UNS C38500)  | Chrome plated (FS-QQ-C-320B) |
| Earthing crown       | : Bronze (UNS C54400) | Nickel plated (FS-QQ-N-290A) |
| Insulator            | : PEEK                | -                            |
| Female contact       | : Bronze (UNS C54400) | Gold plated (ISO 4523)       |
| Male contact         | : Brass (UNS C38500)  | Gold plated (ISO 4523)       |
| Notched nut          | : Brass (UNS C38500)  | Chrome plated (FS-QQ-C-320B) |
| Locking washer       | : Bronze (UNS C52100) | Nickel plated (FS-QQ-N-290A) |
| Other metallic parts | : Brass (UNS C38500)  | Nickel plated (FS-QQ-N-290A) |
| Contact wire         | : Bronze (UNS C27400) | Tinned                       |
| Position insert      | : POM                 | -                            |

Panel cut-out



Torque for mounting nut : 2.5 Nm

A-A cross-section (PCB drilling pattern)



Spanner for notched nut : DCH.91.121.PA

**Fixed socket , with two nuts , with elbow (90°)  
contact for PCB . (Back panel mounting) .  
Series 0S , multiple (3)**

ETUDE N° E1743-E1812

|              |          |            |                 |
|--------------|----------|------------|-----------------|
| Echelle<br>— | Dessiné  | 16.01.1990 | MRI / RMO       |
|              | Contrôle | 16.06.2011 | JPBA/ATVI       |
|              | Modif.   | 01         | 16.06.2011/ OVU |



**LEMO**

CH-1024 Ecublens

**ECP.0S.303.CLV**