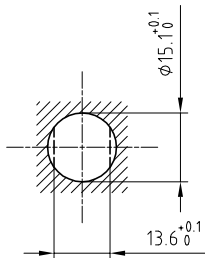


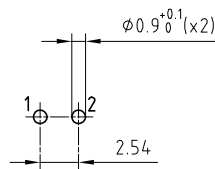
Outer shell	: Brass (UNS C38500)	Chrome plated (FS-QQ-C-320B)
Earthing crown	: Bronze (UNS C54400)	Nickel plated (FS-QQ-N-290A)
Insulator	: PEEK	-
Female contact	: Bronze (UNS C54400)	Gold plated (ISO 27874)
Clip	: Cu-Be (UNS C17200)	-
Notched nut	: Brass (UNS C38500)	Chrome plated (FS-QQ-C-320B)
Locking washer	: Bronze (UNS C52100)	Nickel plated (FS-QQ-N-290A)
Other metallic parts	: Brass (UNS C38500)	Nickel plated (FS-QQ-N-290A)
Adaptor rivet	: Brass	Gold plated (ISO 27874)
Contact wire	: Brass (UNS C27400)	Tinned
Position insert	: FEP	-

Panel cut-out



Torque for mounting nut : 6 Nm

A-A cross-section (PCB drilling pattern)



Spanner for notched nut : DCH.91.201.PA

**Fixed socket , with two nuts , with key (G) , with elbow (90°) contact for PCB . (Back panel mounting) . Series 2B , multipole (2)**

ETUDE N° E1406-E6296

Echelle	Dessiné	24.11.2017	OVU / NHA
	Contrôle	24.11.2017	NHA / ATVI
	Modif.	00	24.11.2017/ OVU



**LEMO**

LEMO SA  
Chemin des Champs-Courbes 28  
1024 Ecublens - SWITZERLAND

Tel. (+41 21) 695 16 00  
email : info@lemo.com  
www.lemo.com

**ECG.2B.302.CLV**