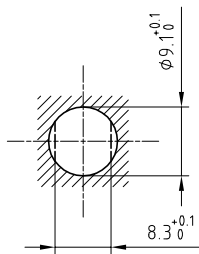


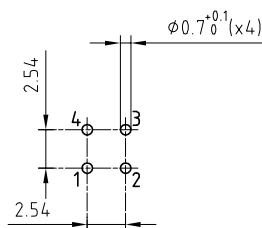
Outer shell	: Brass (UNS C38500)	Chrome plated (FS-QQ-C-320B)
Earthing crown	: Bronze (UNS C54400)	Nickel plated (FS-QQ-N-290A)
Insulator	: PEEK	-
Female contact	: Bronze (UNS C54400)	Gold plated (ISO 4523)
Clip	: Steel	-
Notched nut	: Brass (UNS C38500)	Chrome plated (FS-QQ-C-320B)
Locking washer	: Bronze (UNS C52100)	Nickel plated (FS-QQ-N-290A)
Retaining ring	: PEEK	-
Other metallic parts	: Brass (UNS C38500)	Nickel plated (FS-QQ-N-290A)
Contact wire	: Bronze (UNS C27400)	Tinned
Position insert	: FEP	-
Fixing resin	: Epoxy	-

Panel cut-out



Torque for mounting nut : 2.5 Nm

A-A cross-section (PCB drilling pattern)



Spanner for notched nut : DCH.91.121.PA

Fixed socket , with two nuts , with key (G) , with elbow (90°) contact for PCB . (Back panel mounting) . Series 0B , multipole (4)

ETUDE N° E6158

Echelle	Dessiné	07.02.1991	BT / RMO
	Contrôle	06.05.2010	JPBA/ CDE
	Modif.	06	06.05.2010/ OVU



LEMO

CH-1024 Ecublens

ECG.0B.304.CLV