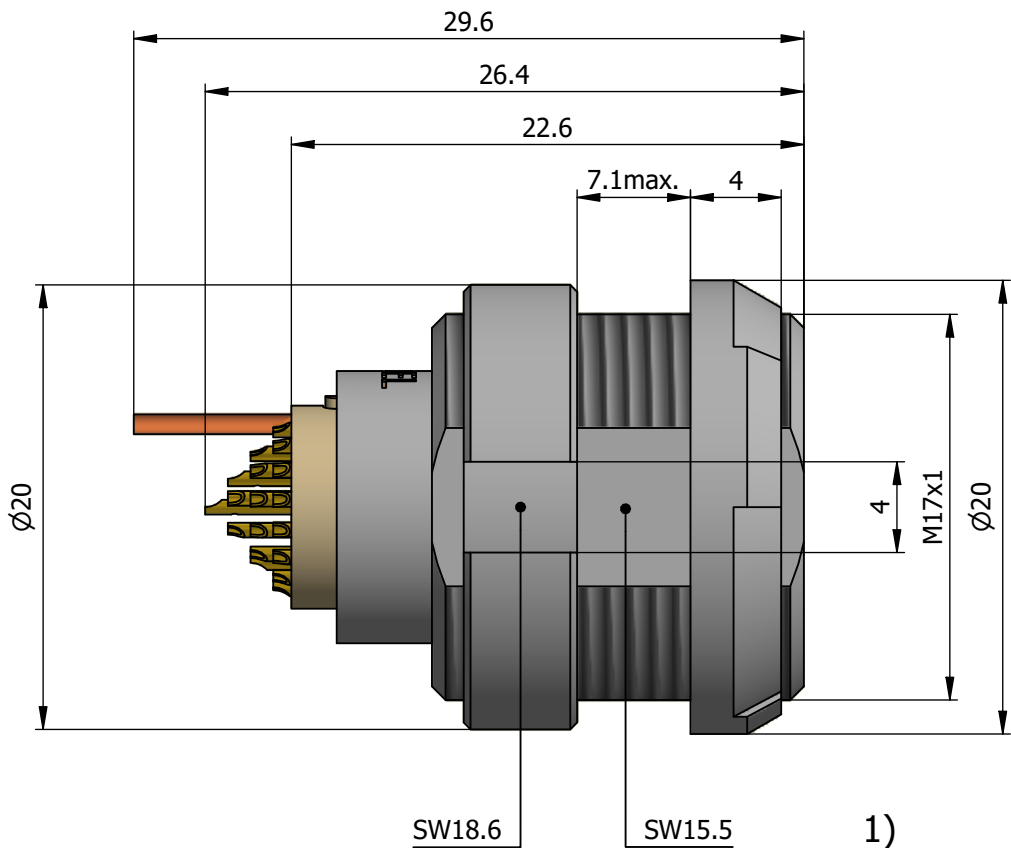
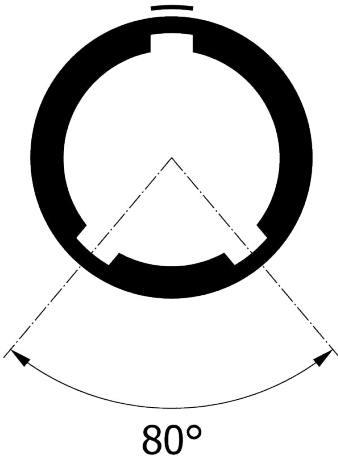
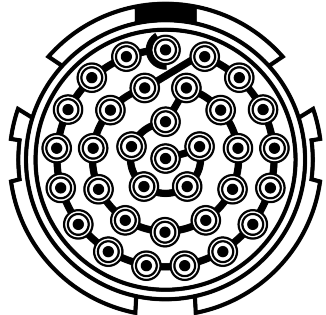


All dimensions are in millimeters (mm)

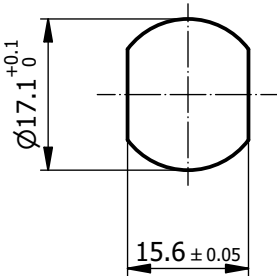
Alignment Key  
Front View



Insert Configuration  
Rear View

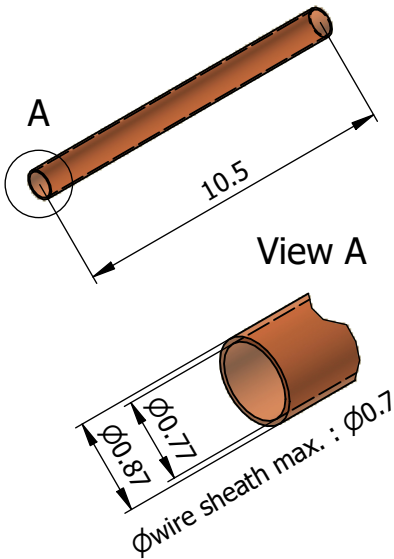


Recommended Panel Cut-Out



Mounting nut torque (Nm)  
Plastic shell = 0.8

x Number of contacts



x 1



Note:

1) This picture is generic and for illustrative purposes only, and may show different keying, materials, colour, finish, and contact configuration. Minor shape or feature variations to actual item may be present.

All additional information are documented on the datasheet (See below link or QR Code)  
[www.lemo.com/pdf/CKH.H34.GLWG.pdf](http://www.lemo.com/pdf/CKH.H34.GLWG.pdf)

Model  
Alignment Key  
Insert Config.  
Housing  
Insulator  
Contact  
Front Nut Color  
**CKH.H34.GLWG**

Datasheet



**Fixed socket with two nuts (back panel mounting), PFA HV Contacts**  
Series 2P



REDEL

Redel SA  
Rue du canal 2  
1450 Ste-Croix - SWITZERLAND

Tel. (+41 24) 455 25 00  
Fax. (+41 24) 455 25 01

CD

Drawn	01.07.2024	MARI / MARI
Checked	30.10.2024	OBAR
Modified	02	30.10.2024 / MARI
DO NOT SCALE DRAWING		

**CKH.H34.GLWG**